
2022 ANNUAL REPORT

GOD'S
PANTRY



LETTER FROM THE DIRECTOR



Dear Friends,

As I reflect on the last year, I cannot help but think of the incredible journey it was for all of us and the progress we have made towards achieving our mission to bring hope and support to our clients. God's Pantry has been steadfast in its dedication to making a positive impact in the lives of formerly incarcerated, gang-affiliated, and at-risk youth by doing the work of feeding over 100,000 families in Los Angeles and San Bernardino counties.

In the past year, we have continued to provide essential services to our clients despite the challenges posed by the post-pandemic recession. We adjusted our operations and adapted our programs to the changing needs of our clients to better serve them. We are proud to have continued providing support to those who needed it the most, and we are grateful to our supporters for helping us make that possible.

Our impact has been felt across a range of areas. We have continued to provide education and training programs to help disenfranchised individuals find healing from years of trauma and hopelessness by receiving our services and finding employment. In turn, our trainees offer hope and support to their peers and those in need in our community.

One of the highlights of this year has been our efforts to address homelessness. From our acquisition of the Women's Home to our efforts in the Emergency Rental Assistance Program, we have helped countless families and individuals avoid homelessness and eviction. We feel strongly about this need and are focused on expanding our services next year to work towards a world where no one has to be unhoused.

None of this would have been possible without the support of our community. We are incredibly grateful to our donors, volunteers, and supporters who have helped us make a real difference in the lives of our clients. We know that there is still much work to be done, but we are confident that we can continue to make a positive impact in the years to come.

Thank you for standing with us.

Augusto "Goose" Dolce
Executive Director



THE VISION

One of the hardest questions we encounter is "What is God's Pantry?" Primarily, we are a food bank that feeds families, but we do so much more. A new vision started forming in front of us that complemented our mission. We envision God's Pantry as a place where everyone can find a second chance, despite their current and past life experiences. The vision quickly became the heartbeat of what makes GP special to so many of us.

Every day, this vision is read out loud by one of our trainees to center us before the work ahead of us. Our vision is to create an organization that is run and led by individuals with social barriers who, in turn, offer hope, training, and support to their peers while allowing them to redirect their lives and become contributing members of our community. While we championed this new vision, our mission never changed. We still hold fast to our calling: Our mission is still deeply rooted in the work of Jesus, which calls us to meet the basic wellness needs of the communities we serve in a practical way.

In 2022, we had over over 100 men and women enroll into our programs from across Los Angeles County and the Inland Empire in an effort to make a difference. They are received into a community of love and kinship with access to resources to work on their healing journey. Often reluctant, the trainees find a renewed sense of hope and joy by serving others.

Last year's growth brought much focus to our growing organization. We created departments and assigned leadership to each, as well as goals and objectives to ensure our impact matches the primary mission of the organization.

THE FOOD PANTRY

Our food pantry feeds over 8,000 families every month thanks to the work of our staff and volunteers, who are composed of at risk foster youth, former gang members, and other justice involved individuals. At God's Pantry they have the opportunity to experience a positive environment that promotes healing and the resources to thrive. We offer an opportunity to serve the common good of the community and help them find their purpose in doing so we restore their personhood as a contributing member of society and their families.



HOUSING



Stability is the key to steady growth and healing for our trainees. Nothing can destabilize progress like the lack of a safe place to lay their heads at night. We believe housing is so important, we have invested in our housing program that helps young adults have a place to live while they work on discovering themselves. Long term, we help our clients navigate common obstacles of getting their own place like credit building, budgeting and learning how to save for the future.

SERVICES

Our Case Management team works closely with our trainees, clients and their families on a variety of issues ranging from record expungements to family reunification. Our case managers assess, advocate, and show up for our clients to support in their journey to remove barriers that may hold them back from the future they envision.



Our goal is to build a foundation of trust using an individualized approach that focuses on the needs of the client - we do whatever works to create a safe and welcoming space for the client by providing trauma-informed care uniquely designed to meet the complex needs of each person.

Our services come at no cost to our trainees and at low cost (subsidized) to our community clients whenever possible. We are proud to provide services in the following areas: Legal Aid and Workshops, Case Management and Navigation, Mental Health (Counseling, Therapy and Life Coaching), Court-Appointed Classes (Anger Management, Substance Abuse, Domestic Violence, Parenting).

COMMUNITY DEVELOPMENT



We love our community and want to see it prosper. We see the pain that the lack of opportunity causes and how it forces individuals into a life of crime. Our methodology for gang and violence intervention stems from a deep understanding of human psychology coupled with decades of lived experience our staff brings to the table. We take a pragmatic approach to prevention that focuses on diversion to provide high risk individuals a way forward while avoiding incarceration.

We are strategic with our programs, social enterprises, and community initiatives to focus on employing populations with barriers to work for the common good of the community. Our goal is to encourage positive activities while reframing or redirecting the same impulses that led them into trouble in the first place. The trainees find a new purpose and pride in taking care of their neighborhood and families in positive ways rather than destructive activities.

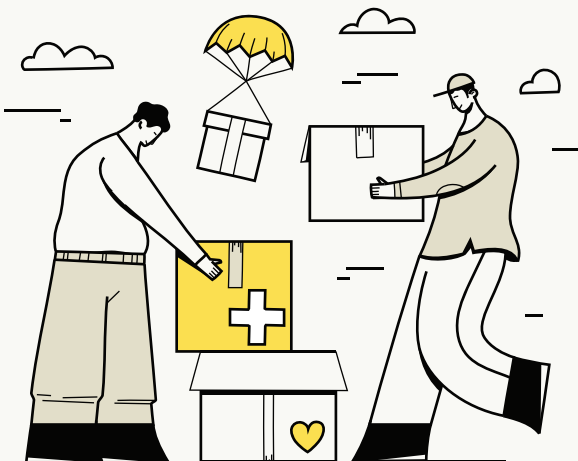
WORKFORCE DEVELOPMENT

Our Workforce and Re-Entry programs focus on providing opportunities for those populations who struggle obtaining and maintaining gainful employment due to their barriers. Many of the trainees, especially our youth and those coming out of incarceration, have never had the experience of working in a professional setting and struggle to fit in. We provide a space for our trainees to develop their employability skills in a safe and appropriately-paced manner.

GP's staff is composed almost exclusively of those with lived experience and trained in trauma-informed care.

The Navigation Team serves as mentors working directly with the trainees to create a sense of belonging, consistency, and guidance that helps them find a secure foundation to rebuild their lives. Ultimately our trainees graduate into jobs and careers at partner organizations or get hired in-house at one of our social enterprises where they can continue to grow and find purpose for their lives, while reframing or redirecting the same impulses that led them into trouble in the first place. The trainees find a new purpose and pride in taking care of their neighborhood and families in positive ways rather than destructive activities.

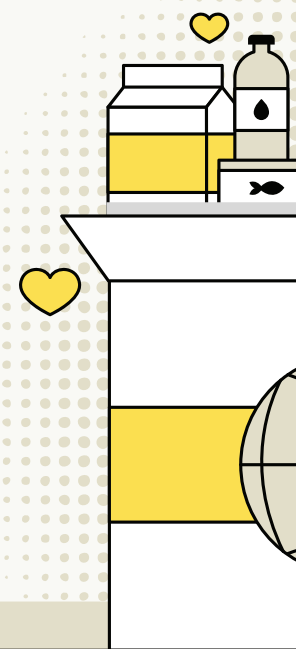




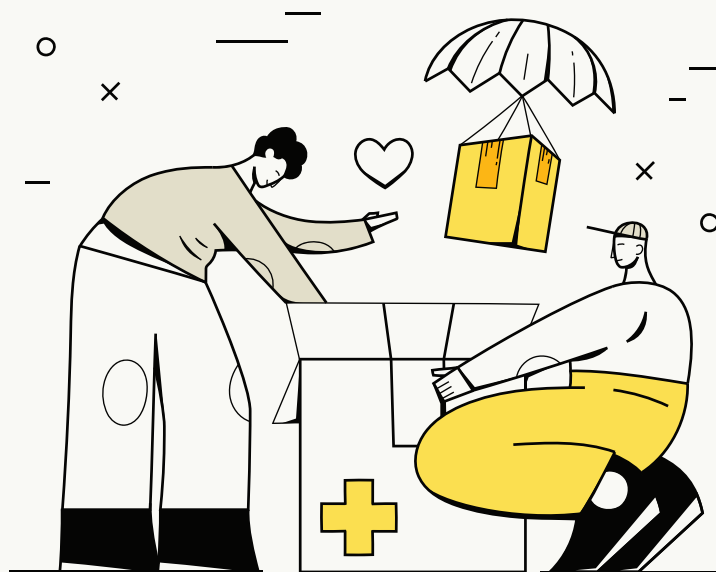
2022

AT A GLANCE

- 100,068 Families fed
- 2.5 Million pounds of groceries rescued
- 23,500 home deliveries to seniors and families
- 2,389 Volunteers spots filled
- 7,053 Hours volunteered
- 51,270 Hours worked by 108 unique trainees
- \$822,381 Earned in gainful employment



- 36 Unique clients who stayed in our housing program
- 3,334 Nights away from the street
- 482 Counseling sessions provided
- 769 Case Management Appointments booked
- 453 Classes hosted
- 76 Unique individuals doing community service
- 10,037 Hours volunteered for community service



2022 INITIATIVES



NEW HOUSES FOR WOMEN



After many months of searching for a lease that would allow us to house transitioning young women out of homelessness, we had almost given up hope in being able to launch this program. It wasn't until we received a very generous gift in May of 2022 that we were able to purchase our very own home. Our dream for this 5 bedroom home here in Pomona is that it will provide housing for countless women and their children over the next 100 years.



NEW TRUCK FROM EFR1

CalRecycle awarded God's Pantry with our very own Freightliner M2 with a refrigerated box. The truck will allow us to increase the number of distributions and food pick ups to feed more families in the upcoming years.



NEW VIP PROGRAM

God's Pantry was awarded \$2.6 Million over the next 3 years to develop strategies and programs to address the increasing violence in the city of Pomona.



NEW RE-ENTRY PROGRAM

We were also awarded the Adult Re-entry Grant (ARG) that will fund our Warm Hand-off Program for individuals looking to rebuild their lives post incarceration.

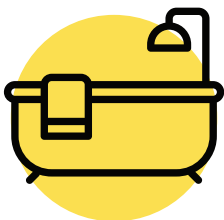


UPCOMING PROJECTS

NEW MEN'S HOUSE

In order to expand our current operations, we have decided to move our men's housing off site. The move will open up additional office space as well as make more room in the warehouse currently occupied by temporary offices. We are praying for a door to open to secure an additional home we can use for housing.

LAUNCHING Q1-Q2 2023



NEW BATHROOM FOR THE WOMEN'S HOME

Our women's home has housed 21 unique guests since its opening in June 2022. In its current configuration it can accommodate 6 residents in the main home and a family of 4 in the backhouse. We are planning on adding a bathroom upstairs to allow up to 12 guests to live in the main home, doubling its current capacity. LAUNCHING Q2 2023



CULINARY PROGRAM

We are excited to launch our own culinary program in partnership with Purpose Church and the BSCC's CALVIP Grant. The program will allow 16 trainees with paid work experience, a culinary certification as well as externships at partner restaurants that will lead to steady employment. The program will produce meals for seniors, families and unhoused clients. LAUNCHING Q1 2023



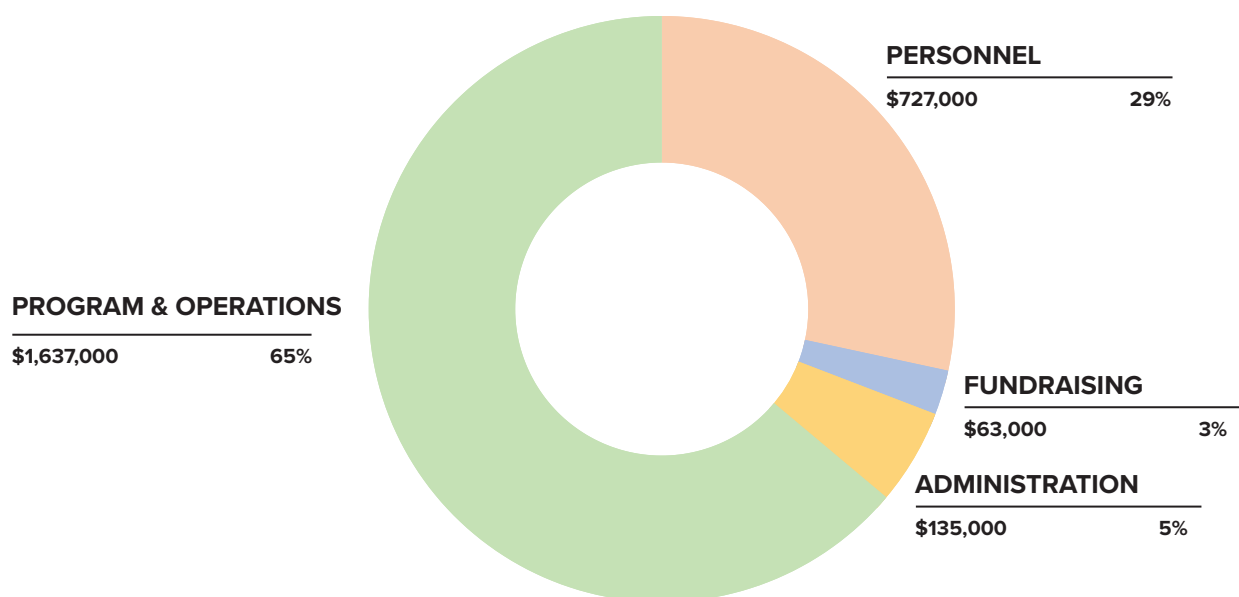
CAFE

Community represents everything we strive for. Our goal is to create a place where people can come and find hope and the Cafe has always been a dream for all of us at GP. As a place we can interact with our community on a personal level. We are working towards our first location following the culinary program. LAUNCHING Q3.

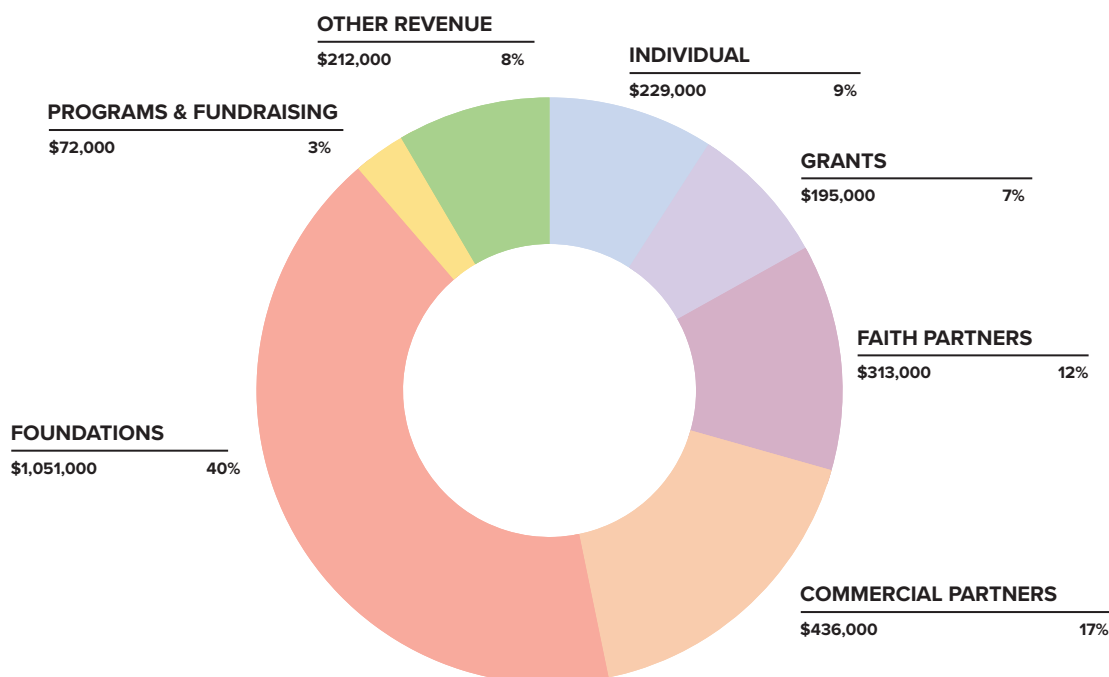
Financial Highlights

Due in large part to a generous, one-time gift, God's Pantry overall revenue for 2021 was \$2.6 million, with an increase of \$1.3 million or 100% from the prior year. Revenues from individuals, corporate and foundations grew from previous year rounding off a healthy diverse source of funding. Investment in program staff, trainee workforce development, and essential services for trainee and community clients represented almost 90% of our total expenses.

EXPENSES SUMMARY 2.5 MILLION



REVENUE SUMMARY 2.6 MILLION





THANK YOU DONORS

\$100K+

ONE&ALL CHURCH
ANONYMOUS

\$10K+

CALIFORNIA COMMUNITY FOUNDATION
THE BARRY AND WENDY MEYER FOUNDATION
MOORE REAL ESTATE GROUP
CHRIST-CENTERED MINISTRIES
INLAND HILLS CHURCH
HILLSIDE COMMUNITY CHURCH
FMTC, IRA
FAMA UE

\$5K+

GRAND CENTRAL RECYCLING A
C2C INDUSTRIES LLC
ASLAM MALIK
JOSEPH ANTONELLI
CROSSPOINT CHURCH
MATHEW HAWKESWORTH
MANAGED CAREER SOLUTIONS SPC
JAMES AND CATHY GREEN
RM DALTON CORPORATION
THE ALBERTSONS COMPANIES FOUNDATION

\$1K+

TRI-CITY MENTAL HEALTH
POMONA VALLEY CHURCH CORP
MINISTERIO CAS DE DIOS
UNITED WAY DONATION
HOLLYWOOD FARMER'S MARKET
GLOBAL IMPACT
AZUCENA VANERSTROM
NORTH STAR ALLIANCES
PHILANTHROPY INTERNATIONAL
ADVANCED PARKING, LLC
ATHENS SERVICES
BERGSEN INC.
ECOLOGY RECYCLING SERVICES, LLC
AUGUSTO DOLCE
G C BUILDERS
SEI GIVING FUND
TFERNANDO L. TAN
NEW MARK & COMPANY REAL ESTATE
JOE & LARA TINKER
STATE FARM
SHARON GREAVES
EMPLOYERS PREFERRED INSURANCE COMPNAY
MATT & JEN MOORE
DFA CARES FOUNDATION
SEAN MONTGOMERY
ROCKY VIEW FAMILY FARMS
TIM BIDEN
ANDREW CORONADO
LORI SASSOON
RICHARD HEATH & ASSOCIATES, INC.
SADA MANAGEMENT LLC
RACHEL COWMAN
JOHN ARMSTRONG
ACT REFORM FELLOWSHIP, INC.
KYLE HALDIMAN
WEST UNIVERSITY
PAUL LEONE
PETER MEHALECHKO
JEFFREY CHEAN
DASHOR & TABATA, INC.
JOHN BENAVIDEZ
PAUL BUNDA
STEVEN C. BAST
CITY OF POMONA
NADIA DEMOTT
DAVID DINASAN
PETER JOHN KELLY
LAKE GREGORY COMMUNITY CHURCH
LANDSCAPE MANAGEMENT
CONNIE LEYVA
SWAGELOK SOUTHERN CALIFORNIA
TRLSYSTEMS
ALEXANDER CORNEJO

STAFF



ALEX MIRAMONTES
MENTAL HEALTH COUNSELOR



ART CHAVEZ
WAREHOUSE MANAGER



AUGUSTO DOLCE
EXECUTIVE DIRECTOR



BENNY GUTIERREZ
COMMUNITY INTERVENTION
SPECIALIST (VIP)



BRANDON MOORHEAD
COMMUNITY INTERVENTION
SPECIALIST (VIP)



DARLENE IBARRA
CASE MANAGER



DAVID ACEVEDO
RE-ENTRY CASE MANAGEMENT



EMILY DOLCE
GRANTS COORDINATOR



FABIAN RIOS
RE-ENTRY NAVIGATOR



JESSICA PALOMO
PROGRAM MANAGER



JORGE ESPINOZA
SERVICE CASE MANAGER



MATTIE SZCZESNY
RE-ENTRY PROGRAM MANAGER



PATRICK PAZ
FLEET & FACILITIES MANAGER



MERCEDES BARQUERO
REPORTING SPECIALIST



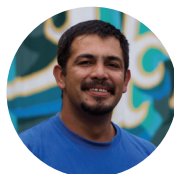
PETRA ZAMORA
SERVICES DIRECTOR



ROBERT JUAREZ
WORKFORCE DIRECTOR



SERGIO BASTERRECCHIA
OPERATIONS DIRECTOR



VALENTIN SILVA
WAREHOUSE ASSISTANT



VANESSA ANCHONDO
PAYROLL SPECIALIST

SUPPORT STAFF



BOARD



TOM SWEENEY

CEO | POMONA UNIFIED
SCHOOL DISTRICT



KEITH ROBY

MEMBER AT LARGE
FIREFIGHTER CHAPLAIN



JASON MAC

PRESIDENT
EL MONTE SCHOOL DISTRICT



MICHAEL KISAKA

BOARD PASTOR
ONE&ALL OUTREACH PASTOR



GORDON JORGENSON

SECRETARY
AZUSA PACIFIC UNIVERSITY



AUGUSTO DOLCE

EXECUTIVE DIRECTOR



JOE TINKER

MEMBER AT LARGE
SMALL BUSINESS OWNER



TOM FLYNN

CFO
FINANCE CONSULTANT



RICK REED

MEMBER AT LARGE
INSURANCE SALES

VISION

Our vision is to create an organization that is ran and led by individuals with social barriers that in turn offer hope, training, and support to their peers. GP allows them to redirect their lives and become contributing members of our community. Our mission is deeply rooted in the work of Jesus which calls us to meet the basic wellness needs of the communities we serve in a practical way. We strive to create a world where everyone can find a second chance despite their current and past life experience.



*GIVE IT TO A HIGHER POWER. IN WHATEVER
SITUATION WE GO THROUGH, NO MATTER WHAT,
WE JUST GO TO PRAY AND STAY POSITIVE,
OPEN-MINDED, AND WILLING TO CHANGE, AND
LEAVE IT IN GOD'S HANDS.*



@godspantry_org



@godspantryca



@godspantry



@godspantry



@gods.pantry



GOD'S PANTRY

gods-pantry.org